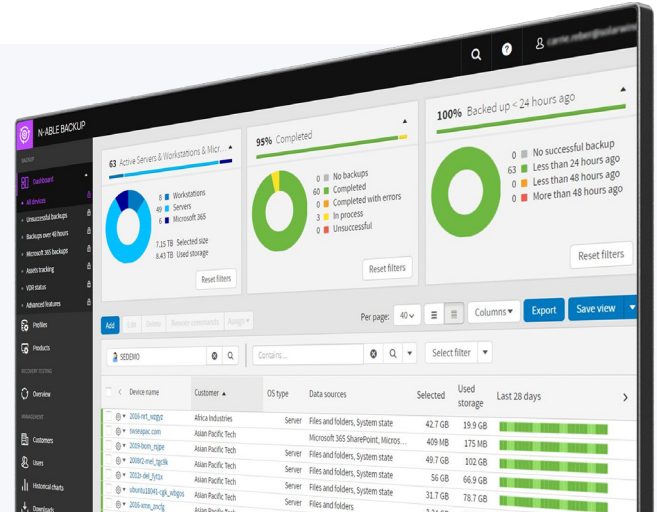


# Cove Data Protection

Cloud-first data protection as a service

Cove Data Protection™ provides streamlined, cloud-first backup, disaster recovery, and archiving for physical and virtual servers, workstations, and Microsoft 365®\* data, managed from a single web-based dashboard. Cove was designed to reduce the cost and complexity of data protection—without sacrificing speed or reliability.



## Flexible recovery options

- Get multiple recovery options from a single product, with no extra charges for different recovery methods.
- Leverage fast file- and folder-level recovery and full system recovery with bare-metal restore or virtual disaster recovery.
- Create a standby server via our continuous recovery option.
- Recover at LAN speed via the LocalSpeedVault option if needed.
- Test and verify backup recoverability on an automated schedule with recovery testing.

## Built for the cloud

- Backing up to the cloud isn't an afterthought with Cove; it was built for that. Our proprietary architecture moves 50 times less data than traditional image backup products.
- Cove's TrueDelta deduplication and efficient architecture make daily backups small and lightweight, allowing you to back up more often.
- Cloud storage (including archiving) is included in your price, and you can keep backup data in region with 30 data centers worldwide.
- AES 256-bit encryption protects backup files in transit and at rest.

Device properties

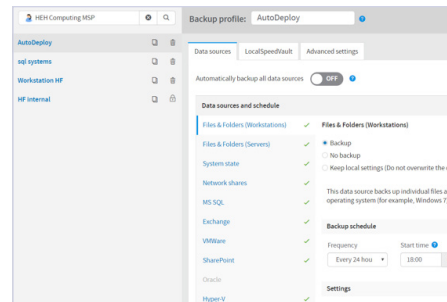
w2012r2-02\_gj0lg

Overview History Statistics Errors Audit Processed files Removed files VDR session verification

Last 28 days

Start	Duration	Data source	Action	Status	Errors	Selected size	Selected files	Processed size	Prof
11/27/18, 12:39 PM	1m 46s	System state	Backup	Completed	0	13.6 GB	118496	227 MB	
11/27/18, 12:33 PM	6m 20s	Files and folders	Backup	Completed	0	20 GB	113992	1.10 GB	
11/27/18, 6:36 AM	1m 31s	System state	Backup	Completed	0	13.6 GB	118496	229 MB	
11/27/18, 6:32 AM	3m 25s	Files and folders	Backup	Completed	0	20 GB	113112	1.29 GB	
11/27/18, 12:36 AM	1m 14s	System state	Backup	Completed	0	13.6 GB	118496	227 MB	
11/27/18, 12:33 AM	3m 31s	Files and folders	Backup	Completed	0	20 GB	112639	1.27 GB	
11/26/18, 6:38 PM	1m 15s	System state	Backup	Completed	0	13.6 GB	118496	227 MB	

TrueDelta technology sends a fraction of the data over the WAN during daily backups.



Define profiles for device types for auto-deployment to help save time and increase consistency.

## No hardware hassles

- Cove is a SaaS application—no need to patch, upgrade or maintain a local application server.
- Appliance-free direct-to-cloud backups help save you time and money.
- No need to buy, provision, or manage local data storage for your backups. Storage in our private cloud is included.
- Keep an optional local copy of your data using an existing network share or other hardware with LocalSpeedVault.

## Features at a glance

### End-to-end security

- **AES 256-bit encryption** is used to help secure files that remain encrypted in transit and at rest.
- **Create your own private key** or have one generated for you during deployment.
- **ISO-certified data centers** are located worldwide, with additional certifications by location.
- **Role-level access** lets you grant limited access to backups as needed, secured with mandatory two-factor authentication.

### TrueDelta technology

- **Byte-level change tracking** between backups helps ensure only changed data within a file gets sent over the WAN.
- **Proprietary deduplication and compression technology** means daily backups are a fraction of the selected size.
- **WAN optimization** helps minimize bandwidth usage; bandwidth throttling is available during business hours for slow network connections.
- **Restore** only what has changed for efficient recovery.

## Efficiency and ease of use

- Simplify backup management and spend less time on routine tasks.
- Manage server, workstation, and Microsoft 365\* backups for multiple locations or customers from a single dashboard.
- Automate backup deployment with device profiles to help provide consistent configurations.
- Manage by exception with customizable views and reporting.

### Microsoft 365 data protection\*

(standalone and integrated into N-central)

- **Recovery of deleted items** helps you keep control of your customers' data in Microsoft 365.
- **Manage Microsoft 365 backups** from the same dashboard as server and workstation backups
- **Seven years' data retention** to help your customers meet regulatory requirements.
- **Storage in our global private cloud** is included. Fair-use policies apply.\*

\* Cove Data Protection for Microsoft 365 includes Exchange™, OneDrive®, and SharePoint data. Fair use policy includes up to 1TB of Microsoft 365 data per unique user.

## Data centers around the world

- **Backup storage** in our private cloud is included in your price.
- **Keep data in region**, with 30 data centers worldwide, located across four continents.
- **ISO 27001, ISO 9001**, and other certifications depending on your chosen data center.
- **Using one vendor** for your backup software and cloud storage simplifies billing and support.

Country	HIPAA	ISO27001	ISO9001	NIST 800-53	PCI DSS	SOC 1 TYPE II	SOC 2 TYPE II
Australia		x			x	x	x
Belgium		x					
Brazil	x		x		x	x	x
Denmark		x			x	x	x
France	x		x		x	x	x
Germany	x		x		x	x	x
Italy	x		x		x	x	x
Netherlands		x	x		x	x	x
Norway		x	x				
Portugal	x		x		x	x	x
S. Africa			x				
Spain		x	x		x		
Sweden		x	x				
Switzerland		x	x		x	x	x
UK		x	x		x	x	x
Canada	x	x		x	x	x	x
USA	x	x		x	x	x	x

\*\* Other location-specific certifications exist, above table contains most requested

Backup data is stored in worldwide data centers built for security and regulatory compliance.

## Supported operating systems

Windows® 8, 8.1, 10 and 11

Windows Server® 2012,  
2012 R2  
2016 (limited)  
2019 (limited)  
2022 (limited)

macOS® 10.15 Catalina  
11 Big Sur  
12 Monterey

GNU/Linux® CentOS 5, 6, 7  
Debian 5, 6, 7, 8  
OpenSUSE 11, 12

## Data sources for backup

The Backup Manager handles individual files and directories as well as complex systems, such as:

- Microsoft SQL Server®
- VMware®
- Microsoft Hyper-V®
- Microsoft Exchange™
- Oracle®
- MySQL®

You can also back up and recover the configuration of your operating system (the “System State” data source) and Microsoft 365. The N-central integrated version also supports Microsoft 365 data protection.

Please view [data sources documentation](#) for system compatibility details.

## Additional features

Available on all supported operating systems

- **Multilingual support.** You can use the Backup Manager in any of these seven languages: English, Dutch, Russian, German, Spanish, French, or Portuguese.
- **Optional custom branding.** When using the standalone edition, you can brand the Backup Manager for your end users, removing references to N-able. Use a custom name, logo, color scheme, and icons.
- **Remote management.** You can send remote commands to the Backup Managers on your end users' devices.
- **Proxy connections.** The Backup Manager can work from behind a proxy server.
- **Email reports.** Receive email updates on status or recent backup and recovery sessions. This action can be done by an end user in the Backup Manager or remotely, by a service provider or a system administrator. Send emailed reports directly to your customers as needed.
- **Bandwidth usage control.** Help ensure your bandwidth usage never exceeds a specified limit.

Management Console (Web) Backup Manager	<a href="https://backup.management/">https://backup.management/</a>  Client-side backup application available in English, Dutch, Russian, German, Spanish, French, Portuguese, and Norwegian
Virtual Drive	Optionally installed with the Backup Manager, this allows self-service access to backed-up data via a local file browser
Recovery Console	Multi-instance recovery tool for setting up proactive or on-demand data recovery from servers and workstations to any location
Bare-Metal Recovery	Create bootable USB or CD media to recover your system directly to bare hardware without a prior OS installation
Server Tool	Self-service tool for managing seed uploads or downloads from almost any location
Storage Node Installer	Optional installer for a self-hosted storage node



Simple to use, enterprise-class features, very fair on the storage limits, and no gimmicks. 24/7 support. Above all, I saved a client's burning building with this backup service. You can schedule backups nightly, twice a day, or down to every hour if you choose"

- Jeff Olejnik  
Newport Solutions

"The cloud management console includes great monitoring and alerting capabilities for my entire customer base. Very knowledgeable 24/7 support. Proven to have easily recovered clients from ransomware attacks"

- Mark Chesher  
The Data Vault

"It's crazy how little data is sent in daily backups using N-able. We're backing up GBs of data, yet by using the LocalSpeedVault and TrueDelta, we're only transferring a couple of hundred MBs. Backups that used to take eight hours are now complete in ten minutes."

- Kyle Orr  
Orr Systems

Try it free

## About N-able

N-able, Inc. (NYSE: NABL), the solutions partner helping IT services providers deliver security, data protection, and remote monitoring and management services.

N-able fuels IT services providers with powerful software solutions to monitor, manage, and secure their customers' systems, data, and networks. Built on a scalable platform, we offer secure infrastructure and tools to simplify complex ecosystems, as well as resources to navigate evolving IT needs. We help partners excel at every stage of growth, protect their customers, and expand their offerings with an ever-increasing, flexible portfolio of integrations from leading technology providers.

[n-able.com](https://n-able.com)

This document is provided for informational purposes only and should not be relied upon as legal advice. N-able makes no warranty, express or implied, or assumes any legal liability or responsibility for the information contained herein, including for the accuracy, completeness, or usefulness of any information contained herein.

© 2022 N-able Solutions ULC and N-able Technologies Ltd. All rights reserved.

The N-able trademarks, service marks, and logos are the exclusive property of N-able Solutions ULC and N-able Technologies Ltd. All other trademarks are the property of their respective owners.